



## Shannon Grove, Brixton, SW9

2 bedroom house - end terrace for sale

**£950,000**

Freehold

### Property Details

A truly unique two double bedroom end-of-terrace house with a landscaped garden, two roof terraces—including an expansive upper level with panoramic views—and a fully equipped garden studio, set on a peaceful cul-de-sac in Brixton. Lovingly cared for and upgraded by the same owner for two decades, the home opens into a generous double reception with bespoke shelving, wooden floors, and an abundance of natural light. The adjoining modern kitchen is sleek and functional, featuring a large glass ceiling, integrated appliances and bi-fold doors leading to the private garden—an idyllic, palm-framed retreat with decking and a versatile garden studio, ideal for home working or creative pursuits. Upstairs, two stylish double bedrooms include a spacious principal with fitted wardrobes and a second with access to a glass-balustraded terrace and steel stairs rising to a panoramic rooftop escape with built-in lighting, an outdoor power supply and water tap. With precedent for loft extension, this exceptional home offers rare outdoor space, character, and future potential in a vibrant, well-connected neighbourhood.

### Features

- Two double bedrooms
- Garden plus two roof terraces
- Garden studio
- Unique end-of terrace house
- Potential to extend by further two bedrooms and bathroom STNP
- Sought-after location in the heart of Brixton
- Friendly residential street
- Victoria Line a three minute walk
- Brockwell Park a fifteen minute stroll
- Freehold

Council tax band E    EPC rating D (60)







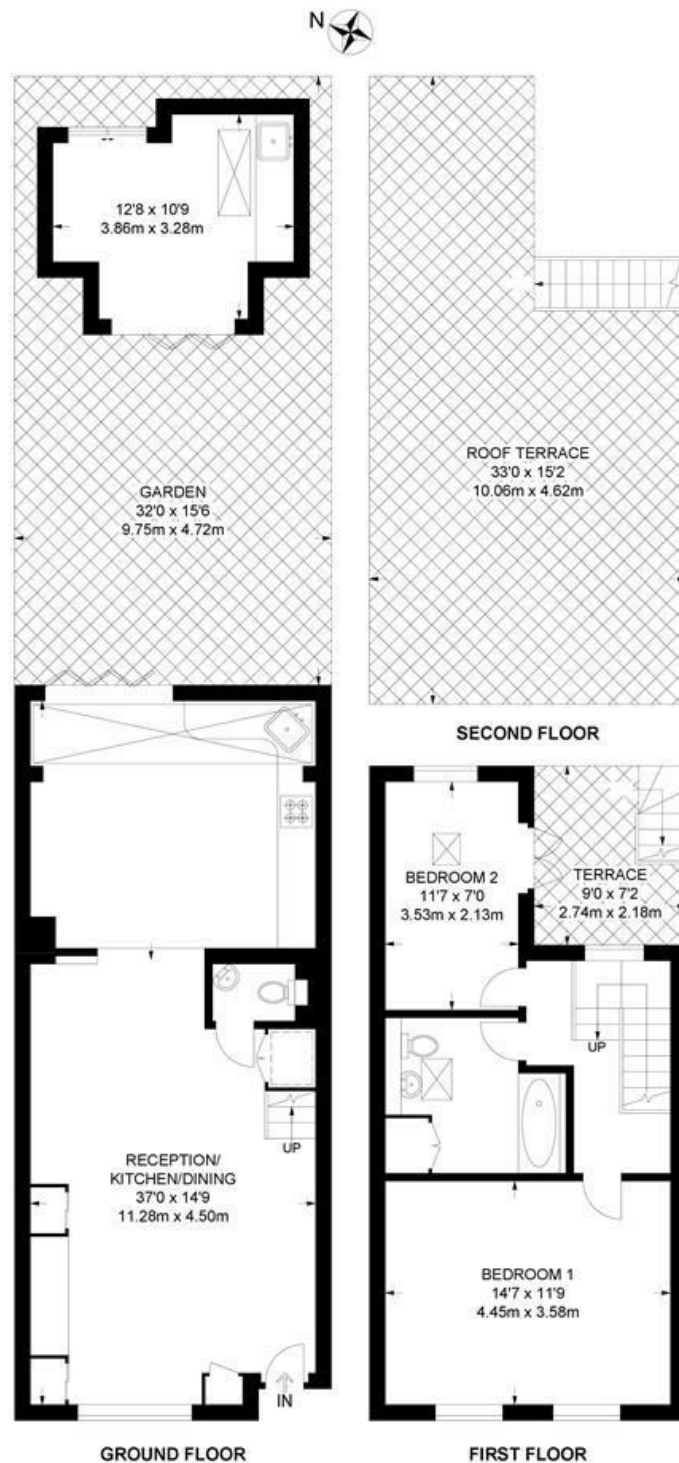




Shannon Grove, Brixton, SW9

**Shannon Grove, SW9**  
**2 Bedroom House**

APPROXIMATE GROSS INTERNAL AREA: **965 SQ FT / 89.7 SQ M**  
TOTAL AREA (INCLUDING OUTBUILDING): **1077 SQ FT / 100.1 SQ M**



While we try our very best, floor plans are produced as a guide only and we take no responsibility for the precise accuracy with which any property is represented.

Shannon Grove, Brixton, SW9

